

Human Security Radar

GROUNDBREAKING TECHNOLOGY FOR
PROTECTING CROWDED PLACES FROM
TERRORIST ATTACK



THE FIRST FULLY AUTOMATIC REAL-TIME
MASS PEOPLE SCREENING SOLUTION

Introducing Human Security Radar – A Unique Capability

Human Security Radar® (HSR) is a fully automatic, real-time threat detection and mass people screening solution that introduces and extends secure perimeters without disrupting the people flow:

- Extremely high throughput of up to 10,000 people per hour
- Capable of screening multiple targets at once
- Exceptional detection accuracy and unmatched false alarm rates
- Detection of IEDs, including those without metal components
- Detection of automatic firearms

HSR - A Paradigm Shift in Homeland Security



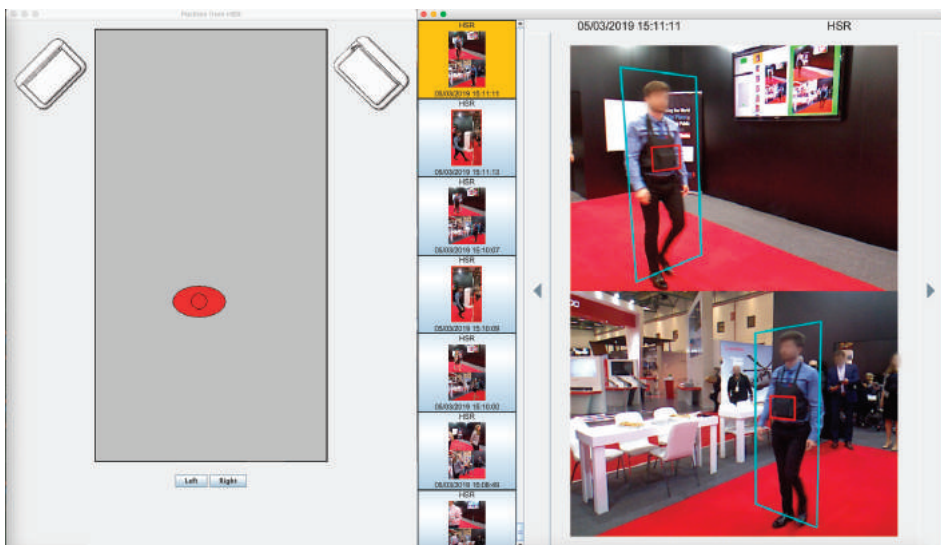
State-of-the-art mass people screening technology for crowded places

Extending the Security Perimeter

Apstec's mission is to make the world a safer place by protecting crowded places from terrorist attack. The challenge for security professionals is to provide this level of protection without interfering with and causing delay to mass people flow. Apstec has been investing in solutions to this challenge and developing screening technology since 2006. The culmination of all of this work and investment is the ground-breaking technology incorporated in HSR.

For the first time ever, HSR offers a genuine solution for simultaneously screening multiple targets in real-time for explosive devices and firearms hidden under clothes and in backpacks. HSR addresses one of the most pressing capability gaps by effectively securing vulnerable crowded places and protecting them from the threat of terrorism.

Fully Automatic and Real-Time



HSR is fully automatic and operates in real time. By analysing the data returned from the inspection zone, the system is able to locate and track threat items. Alerts are presented to the responder in the form of an image of the suspect, indicating identity and where on the body the threat item is being carried.

Configurations and Applications



HSR can be configured to meet a wide range of customer requirements. Ideally suited to be installed at the entrances and approaches to crowded places, it can be deployed overtly to deliver a reassuring message to legitimate users and a strong deterrence effect to potential attackers or covertly to inform a more discrete response.

HSR is ideally suited to protecting places such as mass transit and major transport hubs, landside of airports, places of worship, shopping centres, major events and entertainment venues. The technology offers an effective, functional and streamlined option to secure crowded places where conventional security measures are either not present or impractical.

An Innovative and Rigorously Tested Solution

Backed by years of extensive trials, and rigorous research and development by leading experts at the forefront of radiophysics, electronics, software engineering, security operations and counter- terrorism, Apstec has delivered a truly innovative capability in HSR. Since its inception, HSR has undergone numerous successful trials with leading national police forces, government agencies and counter terrorist organisations. In doing so, it has demonstrated the technology's exceptionally high accuracy rate, low false alert rate and unparalleled throughput. HSR holds patents allowed and pending in 59 countries world-wide.

The Cost-Effective Solution

To cap it all, HSR's ability to detect threats and alert responders automatically precludes the need for operators or human decision makers and offers a uniquely cost-effective solution. With no moving parts, HSR is reliable, requires little maintenance and reduces whole life costs.



Human Security Radar

Real-time inspection	yes
Unparalleled high throughput	yes
Simultaneous inspection of multiple people	yes
Automatic decision making	yes
Detection of IEDs with metallic and with no metallic parts	yes
Detection of automatic firearms	yes
Automatic locating of concealed threats	yes
Probability of detection	high
Low false alarm rate	yes
Adjustable sensitivity levels	yes
Speed of people movement	real flow
Width of free passage	2.2 m
Speed of analysis	real time
Built-in video tracking	yes
Stationary gantry design	yes
Multiple system configurations	unidirectional people flow; two-way people flow
Power supply	1.3kW/220V/50Hz
Integration with other security systems	yes
Health and safety	Meets IEEE C95.1–2005



apstec 
systems